




Join our community

There are many ways to get involved!

Since 2016, OONI has established partnerships with many digital rights organizations: ooni.org/partners

Subscribe to our mailing list, follow us on Twitter and Mastodon, and run OONI Probe to help increase transparency of internet censorship!

 @OpenObservatory  @ooni

Contacting OONI

If you have questions, please feel encouraged to reach the OONI team by sending an email to contact@openobservatory.org.

You can also participate in community discussions and reach the OONI team on Slack: slack.ooni.org



Founded in 2012, the Open Observatory of Network Interference (OOONI) is a non-profit free software project documenting Internet censorship around the world.

Learn more about OONI: ooni.org

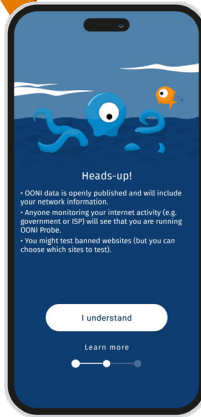


Measuring & Investigating Internet Censorship with OONI data



OONI Probe is free and open source software that runs a variety of network measurement tests to check the following:

- 1 Blocking of websites
- 2 Blocking of instant messaging apps such as WhatsApp, Facebook Messenger, Signal and Telegram
- 3 Blocking of circumvention tools
- 4 Speed and performance of your network
- 5 Presence of middleboxes



! Heads-up!

Please **turn your VPN off** when running OONI Probe to help ensure more accurate test results.

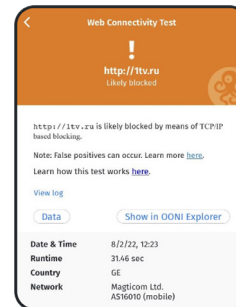
Disclaimer:
Running OONI Probe can potentially be risky in certain countries.

Learn more:



As soon as you run OONI Probe, you will immediately have access to the test results in the app.

Along with an overview of the test result (for example, a tested website is blocked), you will have access to the raw network measurement data. Your test result will be published as open data in real-time.



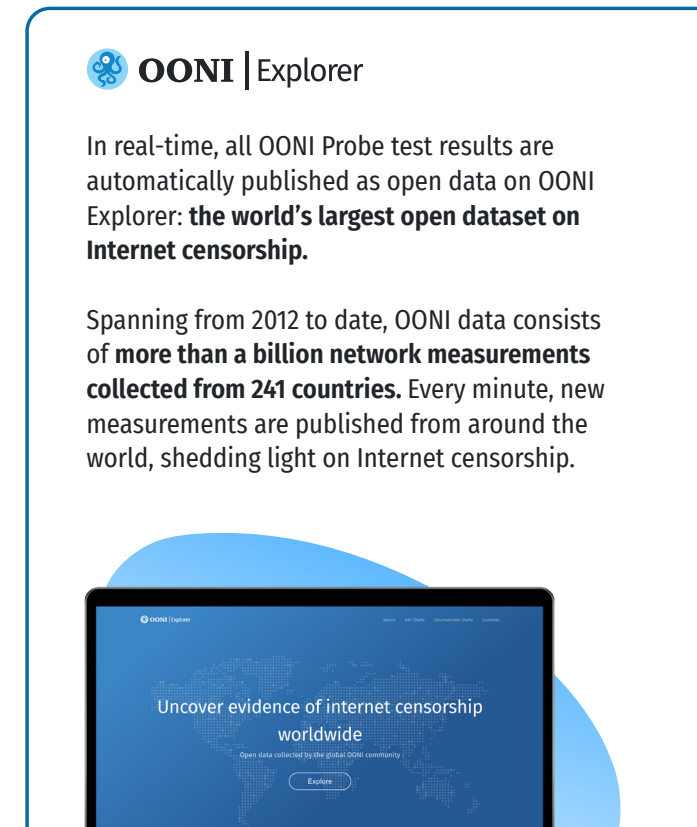
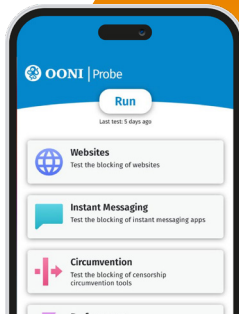
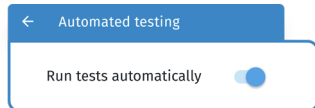
Get the **OONI Probe** app on Mobile and Desktop.

Scan to Install OONI Probe →



To contribute measurements automatically every day, please enable **Automated testing** through the settings of your OONI Probe app.

This will help the internet freedom community to monitor and respond to emergent censorship events!



In real-time, all OONI Probe test results are automatically published as open data on OONI Explorer: **the world's largest open dataset on Internet censorship.**

Spanning from 2012 to date, OONI data consists of **more than a billion network measurements collected from 241 countries.** Every minute, new measurements are published from around the world, shedding light on Internet censorship.

OONI Explorer is a web platform through which you can explore OONI measurements collected from around the world.

Scan to learn more:



The OONI Explorer Search Tool enables you to easily discover automatically **confirmed blocked websites** around the world, and to filter the data based on multiple parameters (e.g. date range, country, network, OONI Probe test, domain, website category).